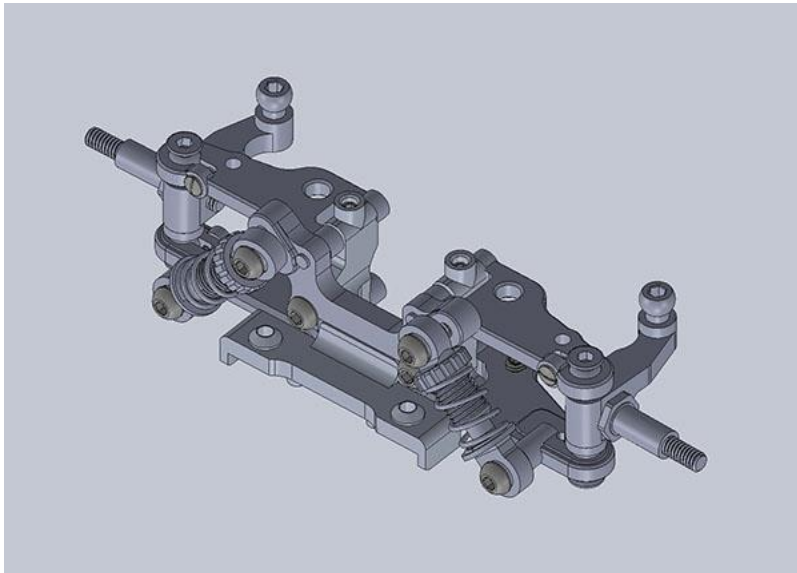


RX28

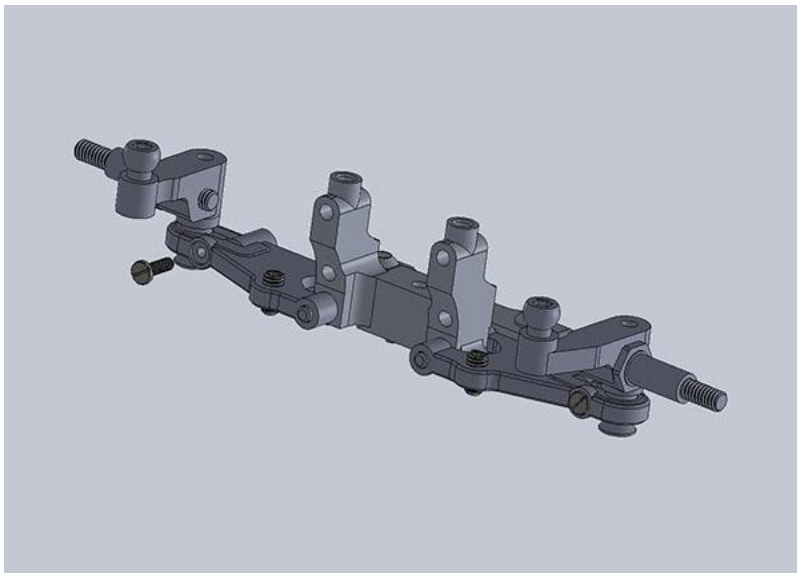
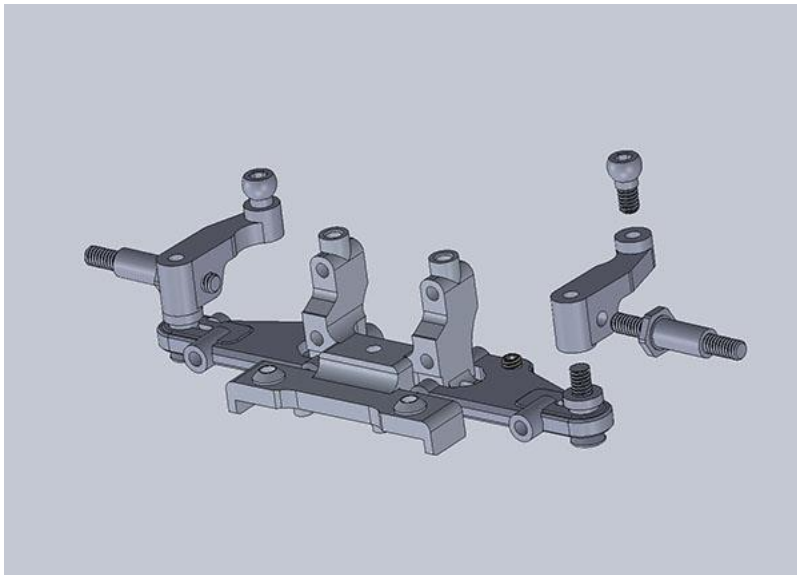
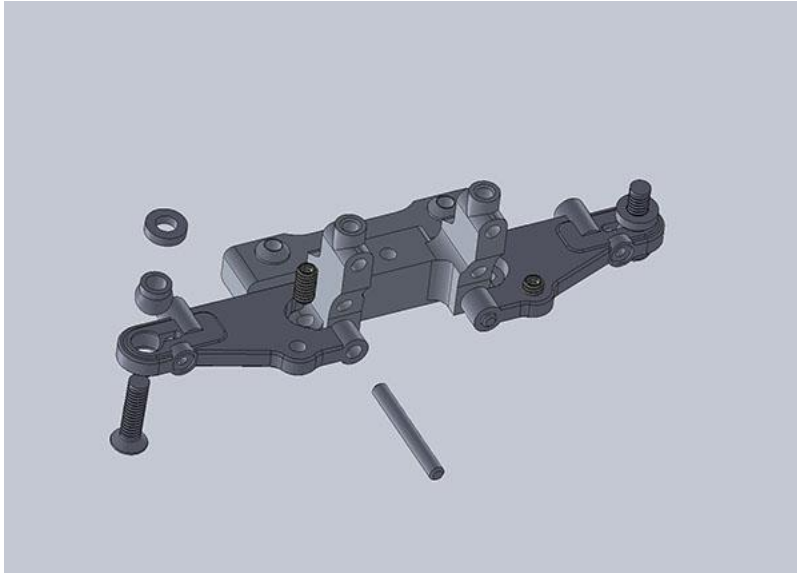
ASSEMBLY INSTRUCTIONS

Welcome to the RX28 Gen2 Assembly Guide. We appreciate you choosing Reflex Racing as your 1/28th scale racing machine!

This manual will help you assemble your double a arm (DAA) front end.



ASSEMBLY INSTRUCTIONS



Start with the bottom arm installation on the bulkhead. Use the long dowel pins to mount the arms to the bulkhead by pressing them in. They are designed so that they will not fall out as they are tight on the arm and free on the bulkhead.

Install the aluminum pivot balls through the side that has the molding dots. This side will face to the top.

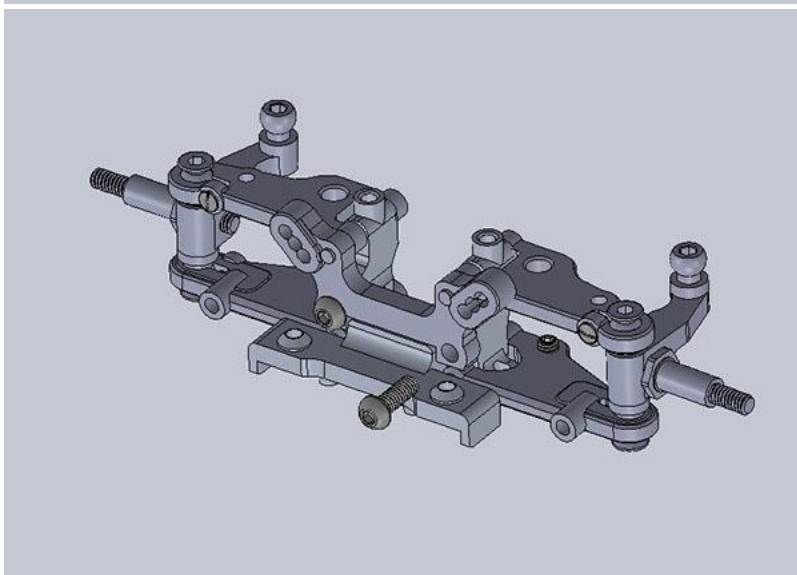
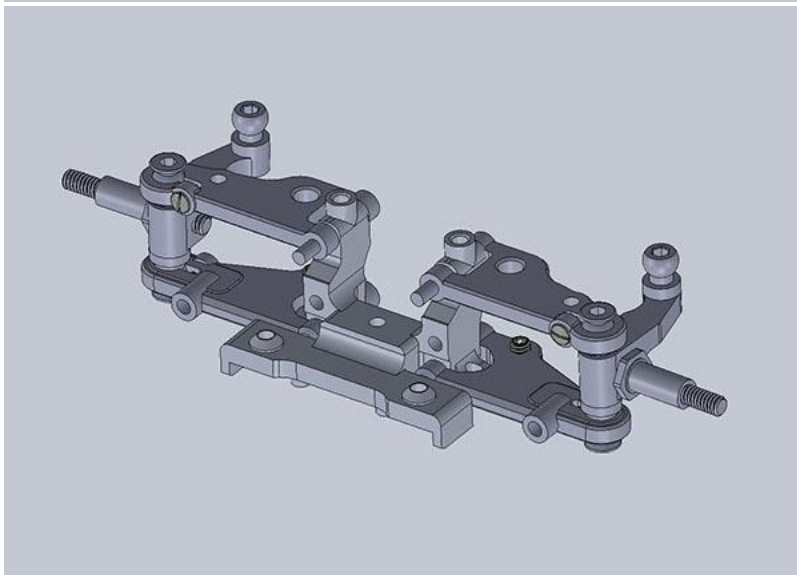
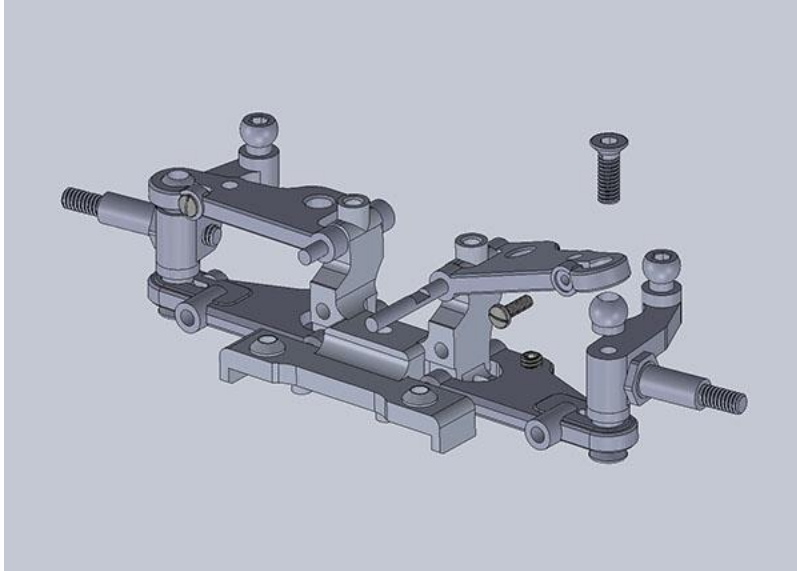
Next, thread the drop set screws (M2x4mm) into the lower arm so that 1.2mm will stick out the bottom of the arm.

Install an M3x8 CS screw through the bottom of the pivot ball and 1pc of the M2x1 shims on each side.

After this, install the axle and 1 pc of the 3.5mm ball stud on each knuckle and tighten the knuckle onto the lower arms with the M3x8 screw on each side.

Lastly, install and tighten the lower arm M1.2 screws, adjust so as to minimize play, but keeping free movement.

ASSEMBLY INSTRUCTIONS



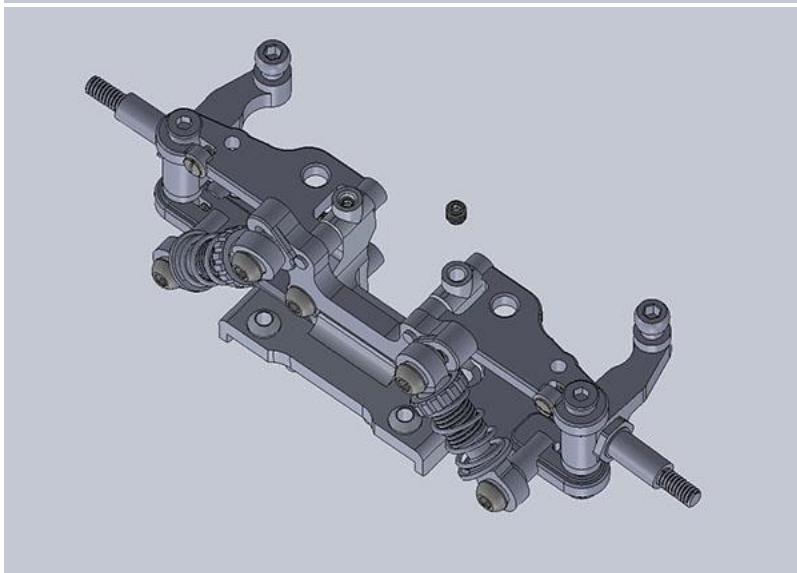
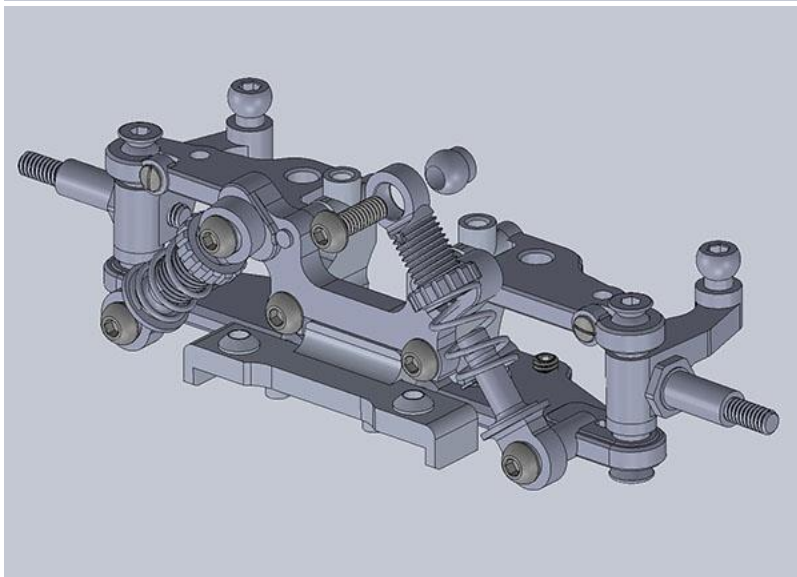
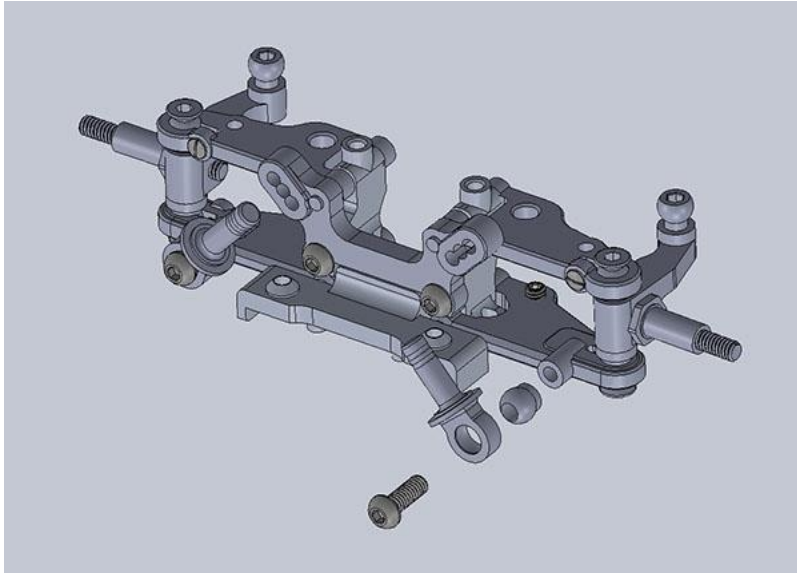
Now we will install the upper arms. Mount the arms by inserting the hinge pins with the flat spot towards the back and towards the top, through the arms and the bulkhead.

Install the upper arm 3.55mm pivot ball through the side with the mold dots. Mount the mold dots facing the bottom of the car. Use an M2x6mm CS screw on each side to attach the upper arm to the knuckle.

After this, install the arm pivot tightening screws and adjust so that the slop is minimized, but the arm movement and knuckles are free.

Next, Install the shock tower with 2x M2x6 BH Screws.

ASSEMBLY INSTRUCTIONS



Time to install the front shocks. Start by installing the lower 3.55mm aluminum pivot balls on the shock piston side and screwing them onto the arm with an M2x6 BH Screw. Do this on both sides. It is a good idea to apply some 30,000 CST Grease or Oil for damping during this step.

After this, thread the Spring adjustment collar on the Front Shock body. Pop the Upper Aluminum Pivot Ball into the socket, slide the spring over the piston and then tighten the upper pivot into the middle hole of the front shock tower with an M2x6 BH screw.

Lastly, install the 2x M2x2mm set screws to secure the upper arm pins into place.

Your front end is ready to install on your chassis.